



Tuesday, April 17, 2018

**STATEMENT OF DIRECTOR PHILIP HELLER
NEW YORK CITY POLICE DEPARTMENT**

**BEFORE THE NEW YORK CITY COUNCIL
SUBCOMMITTEE ON ZONING AND FRANCHISES
APRIL 17, 2018**

Good morning Councilmember Grodenchik and Members of the Council. I am Philip Heller, Director of the NYPD's Capital Construction Unit. On behalf of Police Commissioner James P. O'Neill, I am pleased to testify before your subcommittee today to discuss the NYPD's new 116th precinct.

During the course of the NYPD's long and rich history, the Department has been a pioneering leader in creating, identifying and implementing the best and most successful training and policing practices. When we have new facilities constructed, they are built to the state of the art of that time, designed to meet the needs of the Department, its brave officers and the communities we serve. The same can be said for our delineation of precinct boundaries. This does not mean that we should remain static. The evolution of technology, policing methods and community needs, as well as, population growth, population concentrations, and general development of the City, to name a few, necessitates a regular reexamination of the Department's approach, existing facilities, staffing, resources, and policing methods. What was once state of the art becomes dated. What was once sufficient becomes less so, and what was once effective, must give way to a fresh approach. Under this administration, this Department has been diligent in examining the way we police in the twenty first century, our philosophy, our staffing needs, our equipment, and our facilities. When it comes to the Department's physical infrastructure, we improve it where we can and replace it where we must.

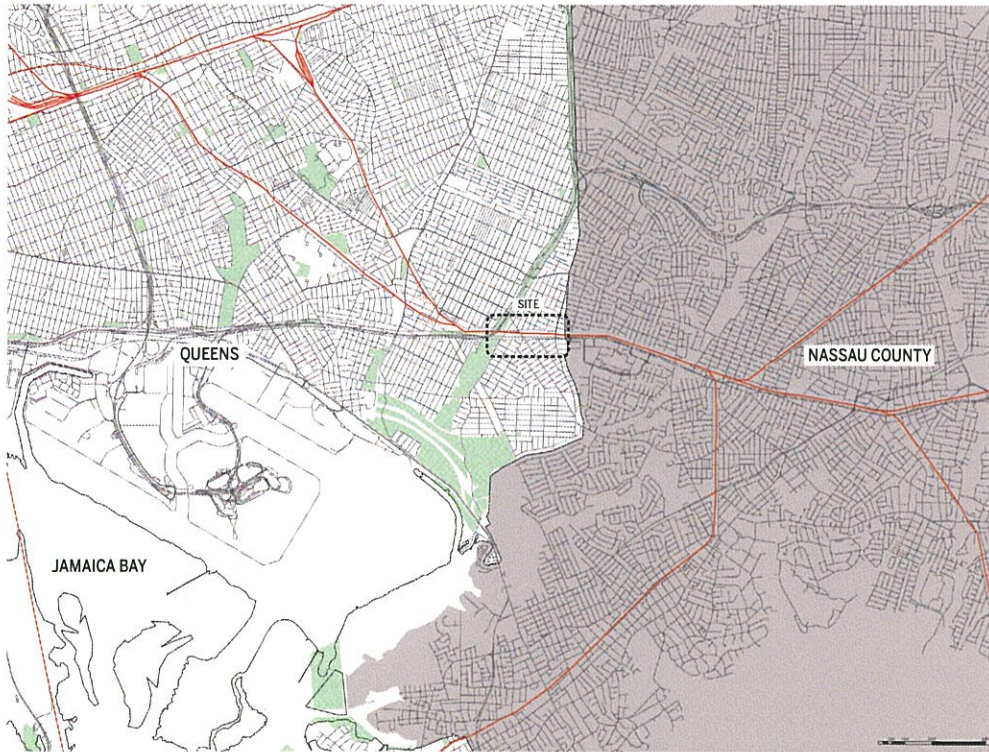
The new 116th precinct will be the latest example of an innovative approach to building police facilities, by including nearly 1000 square feet of space dedicated for community use. This is a physical expansion of our neighborhood policing model, where police can be more fully integrated into the community. Neighborhood Policing is the cornerstone of today's NYPD. The foundation of this philosophy is building relationships, increasing communication and creating partnerships with members of the community. It is a joint effort to decrease crime, a partnership with the community we proudly serve. By sharing space our officers will be more in touch with what is happening in the community and will be able to work more effectively with our community partners.

Furthermore, the 116th precinct is a necessary step in streamlining the NYPD's operations in southeast Queens. As the population has grown and shifted, the burden on the 105th precinct has increased. It is one of the city's largest precincts, requiring officers to cover 12.43 square miles of land and 354 miles of roadway. As a result, response times in the 105th precinct are approximately 2 minutes longer than the city average. The new 116th precinct will cover a little more than half of the 105th precinct's current territory, which we believe will not only help lower response times, but will also enable our officers to more effectively respond to community needs and build the necessary relationships that Neighborhood Policing calls for.

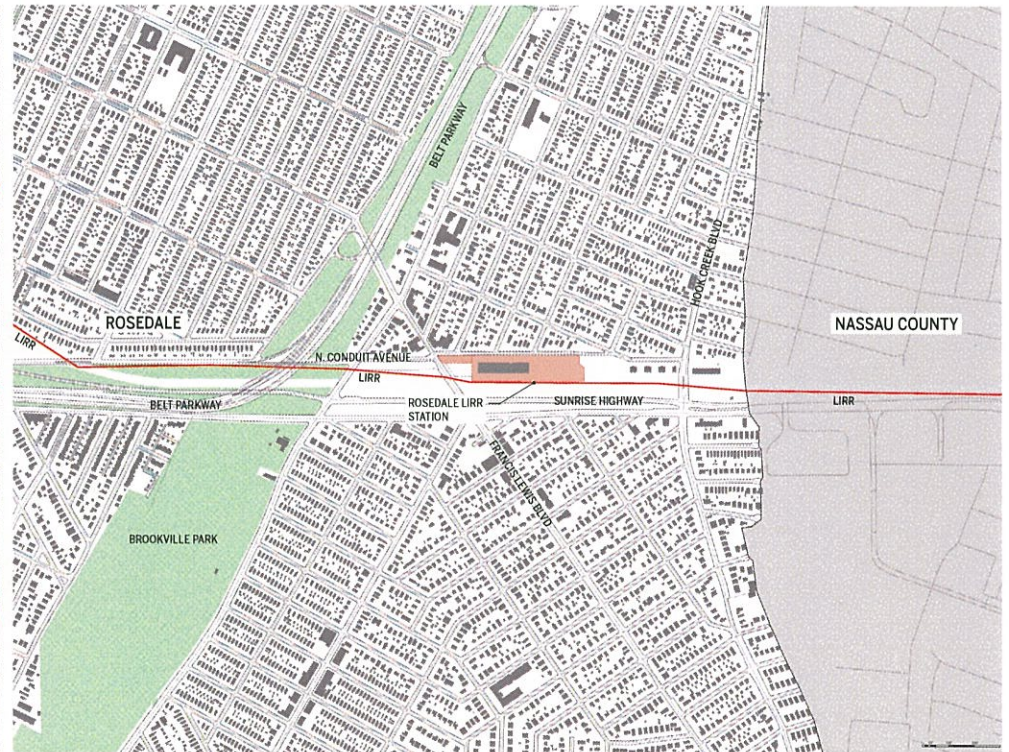
I will now go through a PowerPoint presentation and welcome any questions from councilmembers at the conclusion of the PowerPoint.

116TH PRECINCT STATION HOUSE

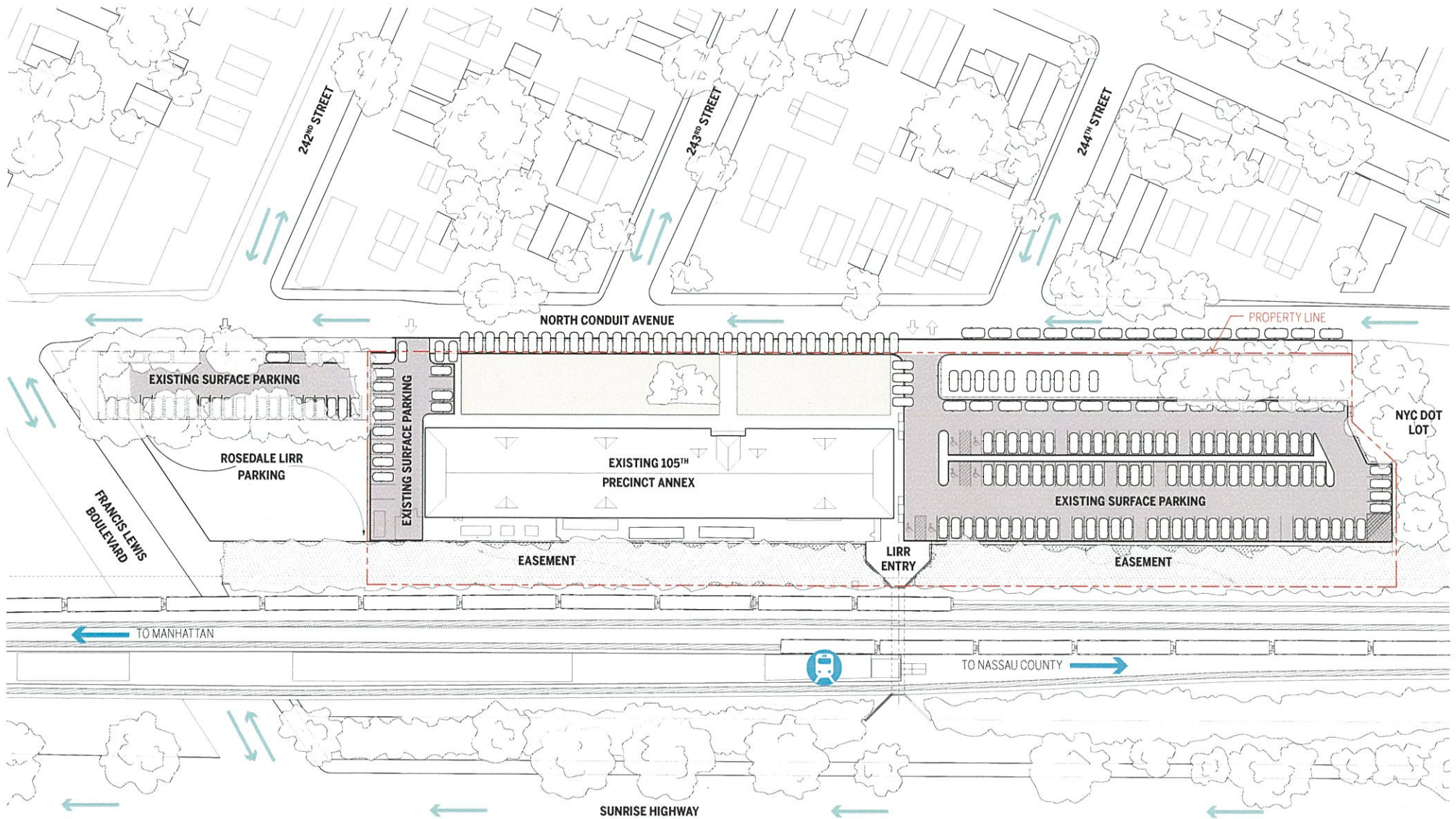




1. Borough scale map. The project site is in Rosedale in southeastern Queens, and is near the Nassau County border.



2. Neighborhood scale map. The project site is immediately north of the Rosedale LIRR Station.



SOUTH ELEVATION

NORTH CONDUIT AVENUE



NORTH ELEVATION

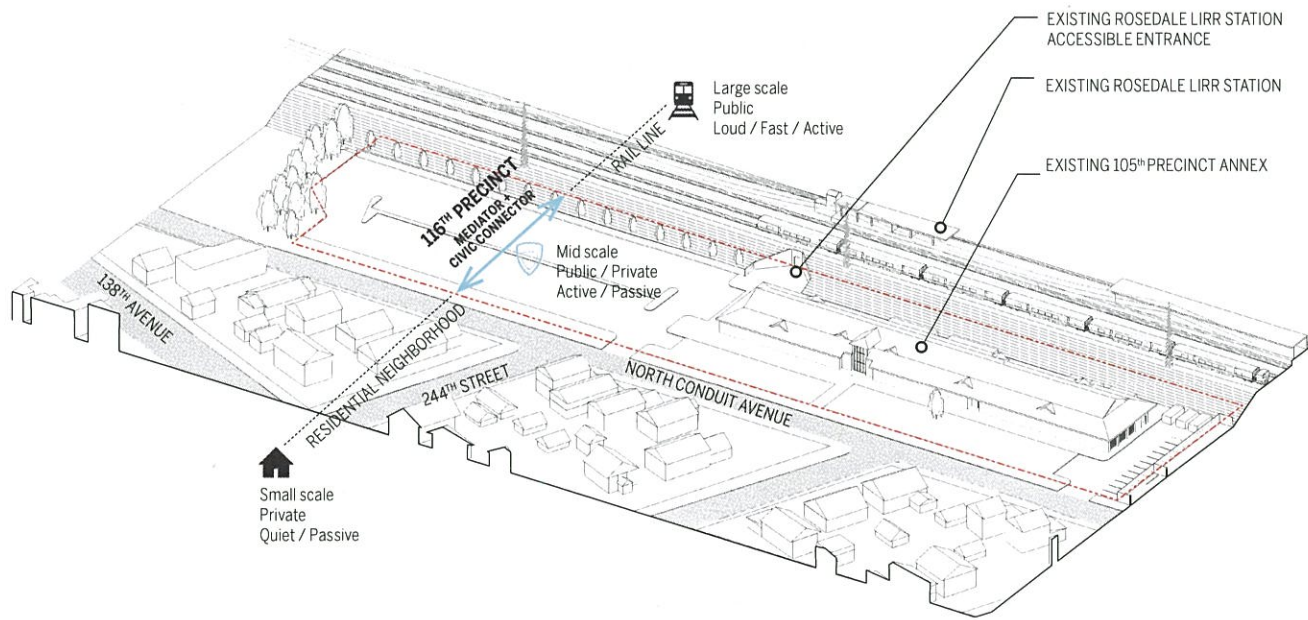
NORTH CONDUIT AVENUE



DattnerArchitects

EXISTING SITE – CONTEXT PHOTOS

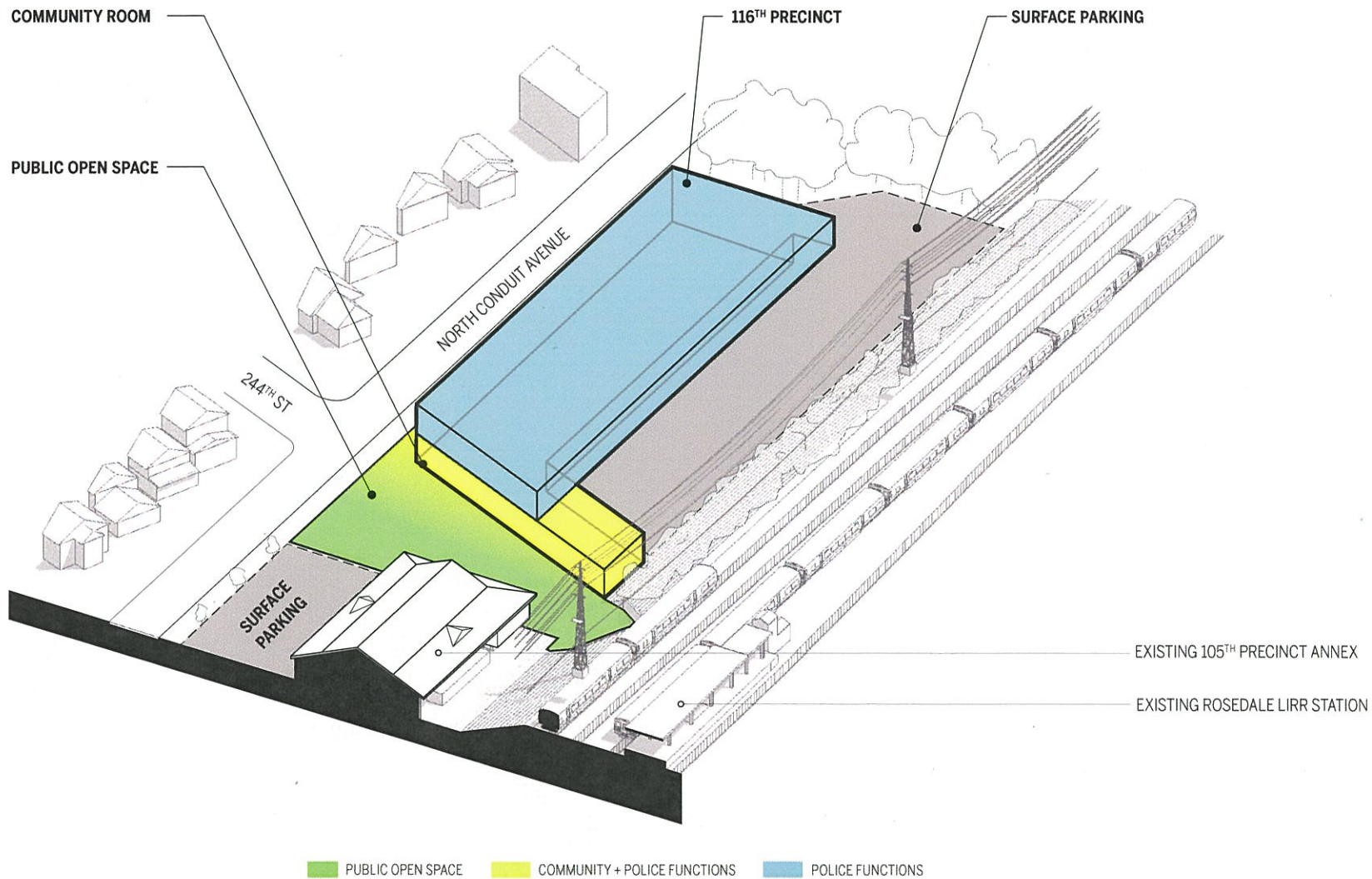
NOT TO SCALE

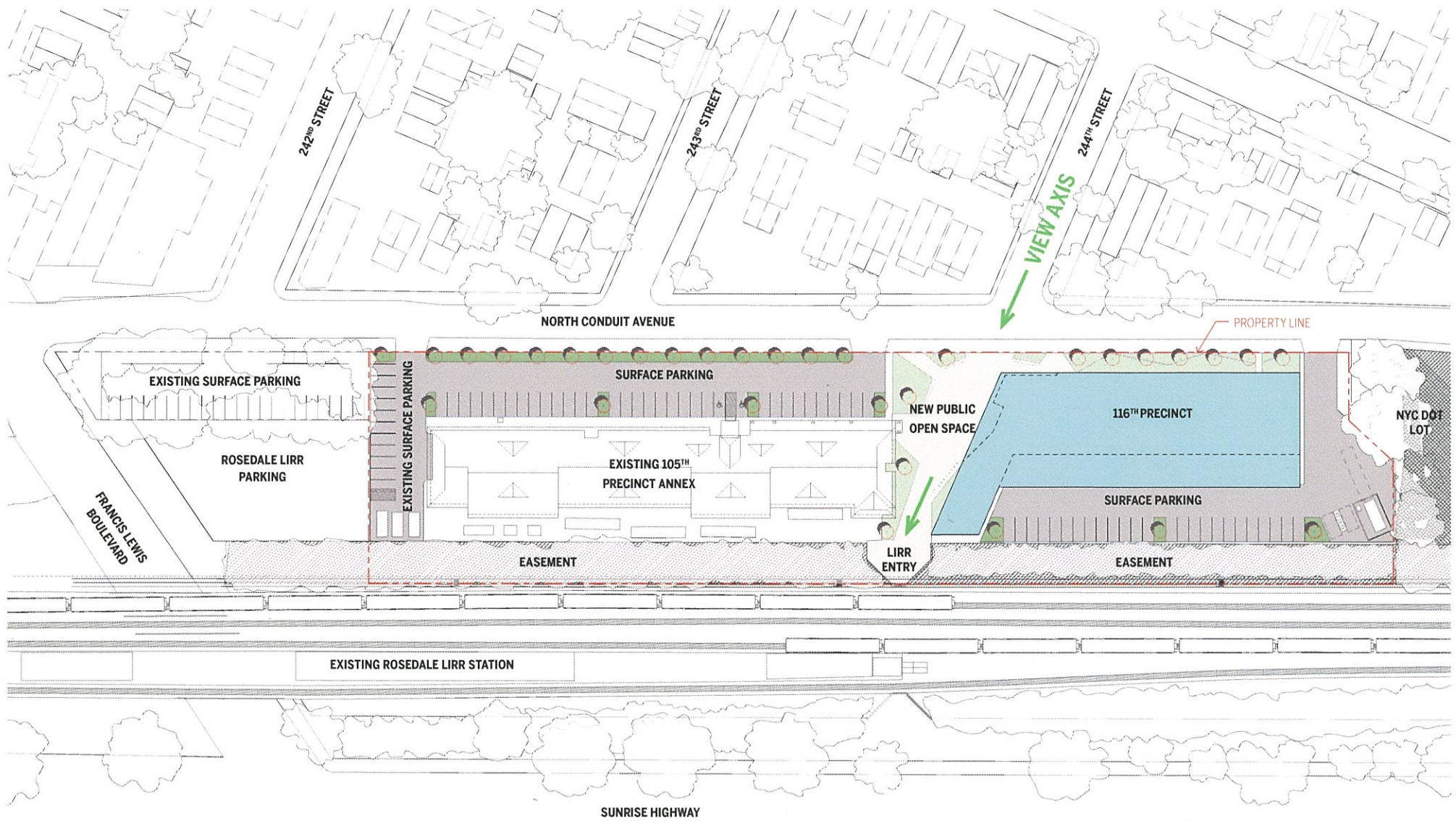


The 116th Precinct is a civic connector that engages both the police and local communities by providing clearly delineated spaces for their various forms of interaction.

This relationship is addressed socially through public engagement programming in the community room and with the creation of a new public open space, and expressed physically through ribbon-like massing strategies and enclosure treatment, and clear circulation, weaving the communities together.

116TH PRECINCT



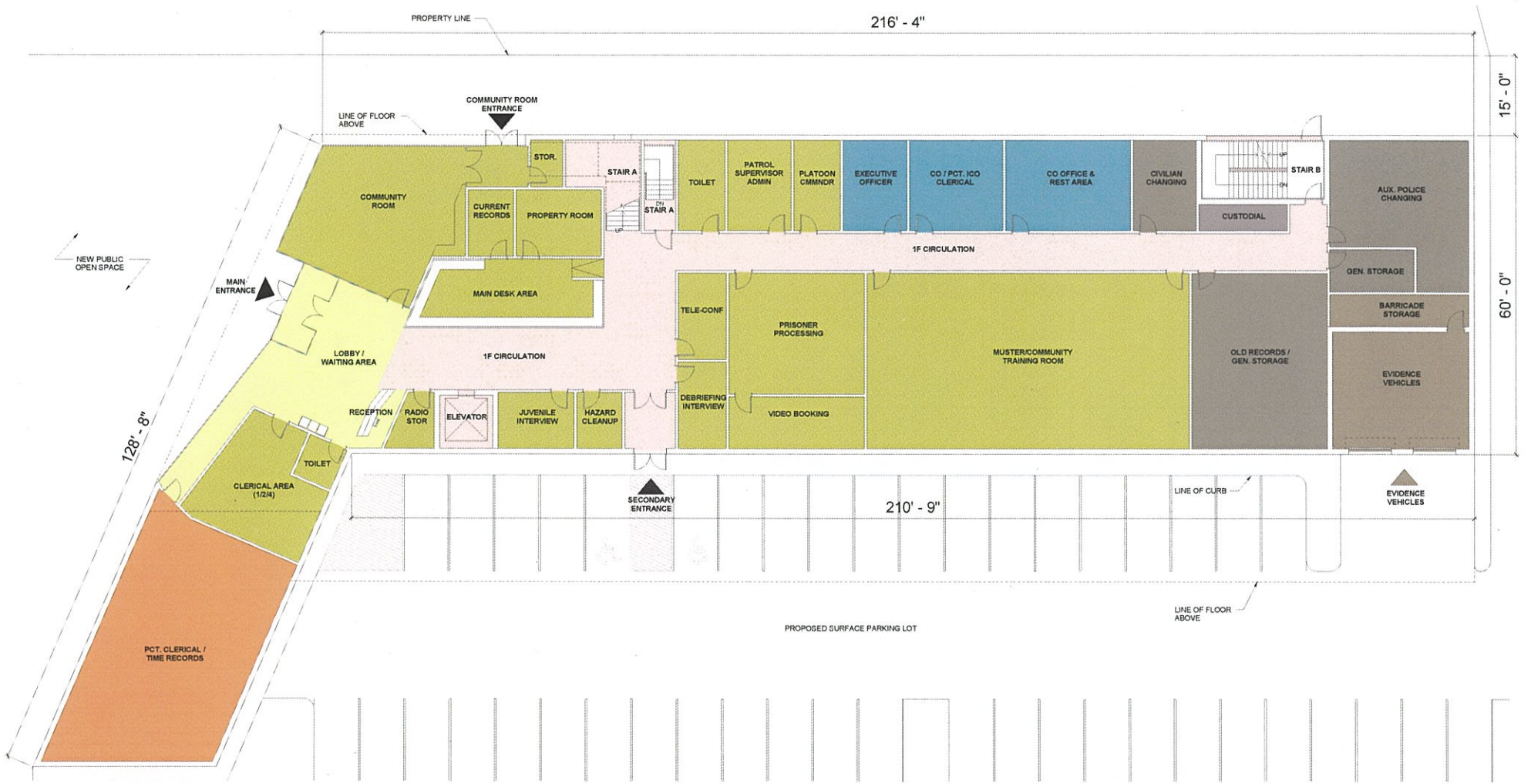


DattnerArchitects

PROPOSED SITE PLAN



0' 64'-0"



- | | | | | | |
|--|--|---|---|--|--|
|  NYPD Program Group I
Building Services |  NYPD Program Group III
Evidence Vehicles / Back of House |  NYPD Program Group V
Lobby / Police Operations / Community Room |  NYPD Program Group VII
Administrative Offices |  NYPD Program Group IX
Detective Offices |  NYPD Program Group XI
Mechanical Rooms |
|  NYPD Program Group II
Civilian Changing Rooms / Storage |  NYPD Program Group IV
Police Officer Changing Rooms |  NYPD Program Group VI
Executive Offices |  NYPD Program Group VIII
Neighborhood and Community Police Offices |  NYPD Program Group X
Supervisor Changing Rooms |  Circulation |

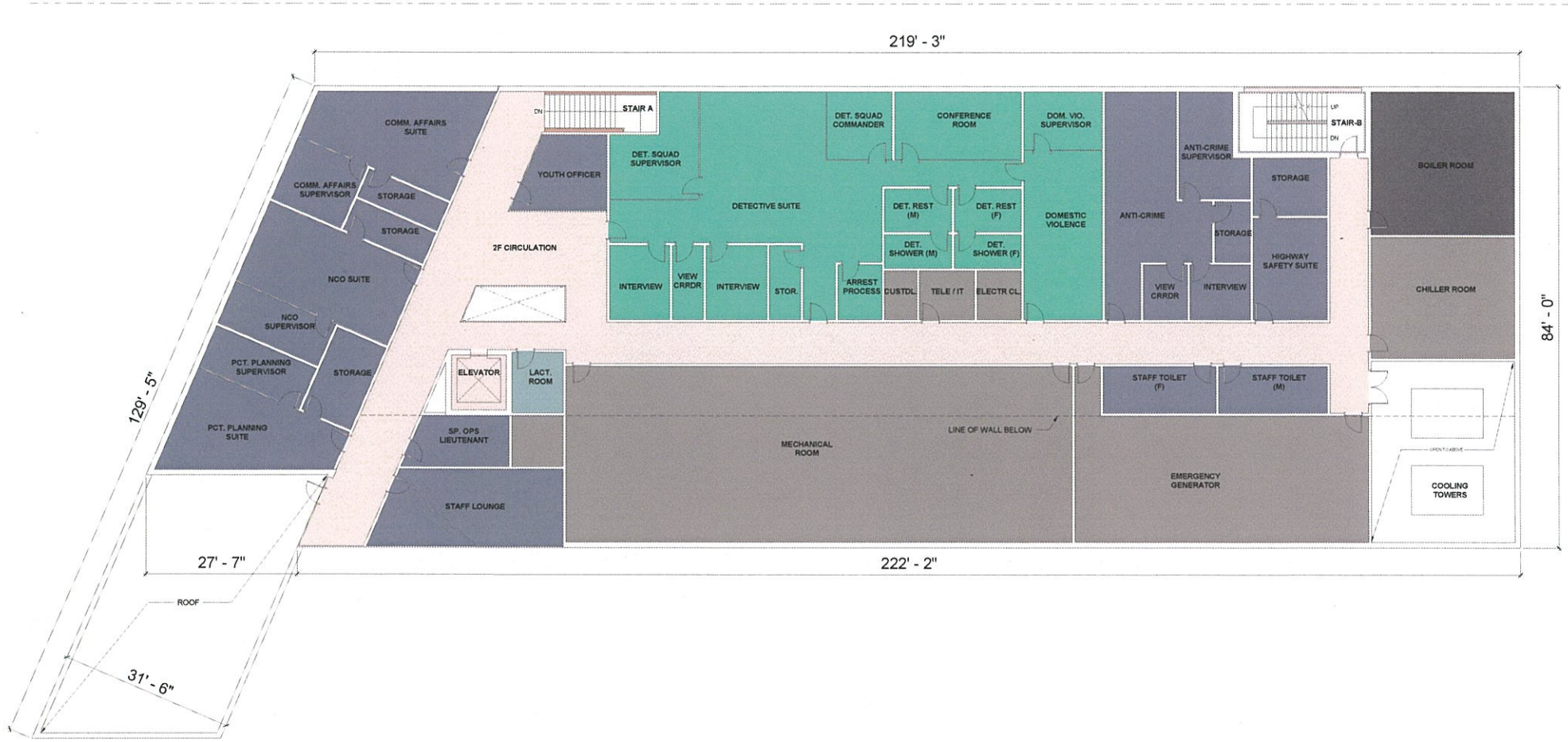


DattnerArchitects

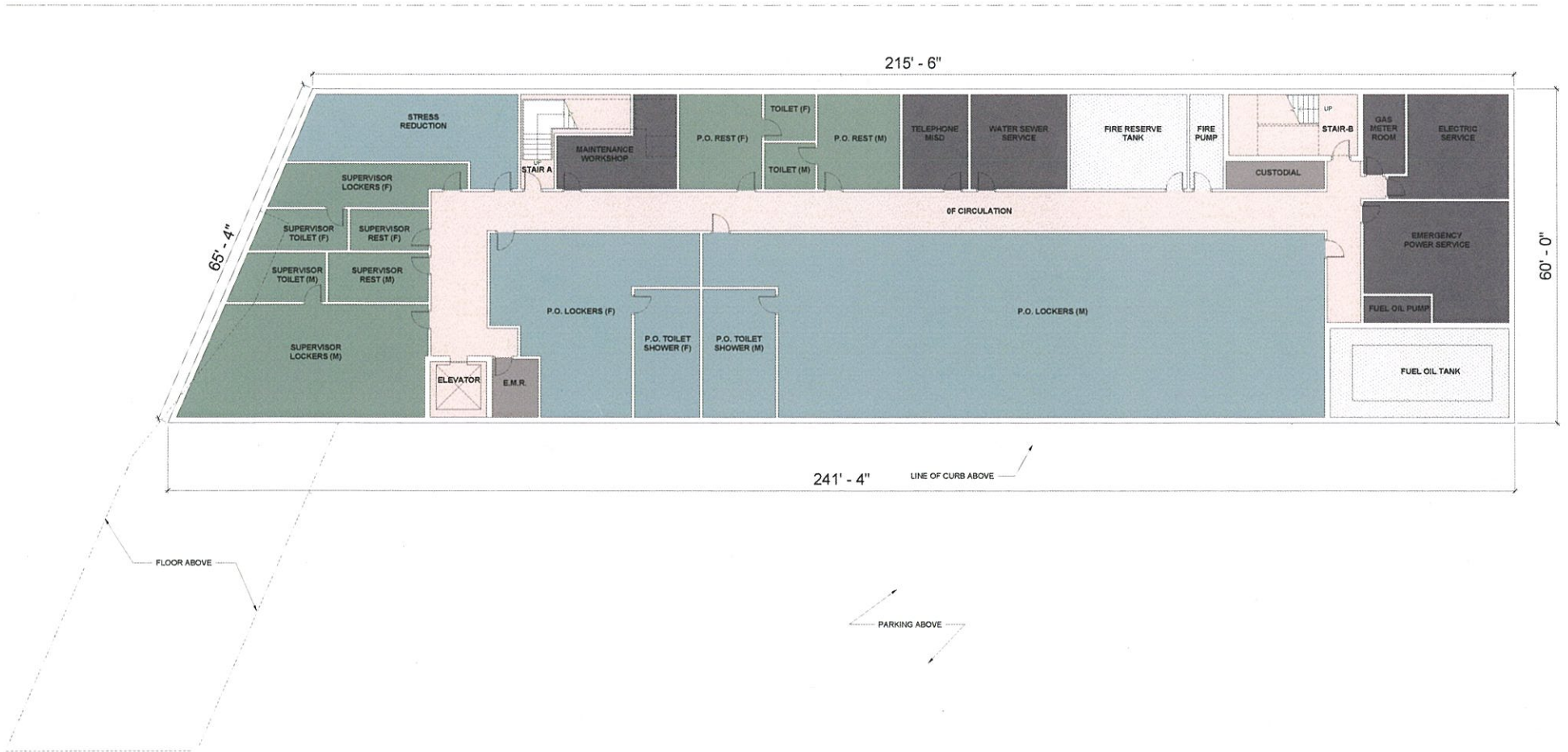


GROUND FLOOR PLAN

0' 8'-0"



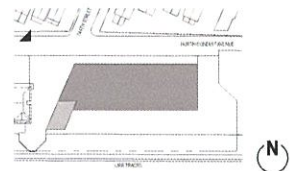
- | | | | | | |
|---|---|--|--|---|---|
|  NYPD Program Group I
Building Services |  NYPD Program Group III
Evidence Vehicles / Back of House |  NYPD Program Group V
Lobby / Police Operations / Community Room |  NYPD Program Group VII
Administrative Offices |  NYPD Program Group IX
Detective Offices |  NYPD Program Group XI
Mechanical Rooms |
|  NYPD Program Group II
Civilian Changing Rooms / Storage |  NYPD Program Group IV
Police Officer Changing Rooms |  NYPD Program Group VI
Executive Offices |  NYPD Program Group VIII
Neighborhood and Community Police Offices |  NYPD Program Group X
Supervisor Changing Rooms |  Circulation |



- | | | | | | |
|--|---|---|---|---|---|
| NYPD Program Group I
Building Services | NYPD Program Group III
Evidence Vehicles / Back of House | NYPD Program Group V
Lobby / Police Operations /
Community Room | NYPD Program Group VII
Administrative Offices | NYPD Program Group IX
Detective Offices | NYPD Program Group XI
Mechanical Rooms |
| NYPD Program Group II
Civilian Changing Rooms / Storage | NYPD Program Group IV
Police Officer Changing Rooms | NYPD Program Group VI
Executive Offices | NYPD Program Group VIII
Neighborhood and Community
Police Offices | NYPD Program Group X
Supervisor Changing Rooms | Circulation |

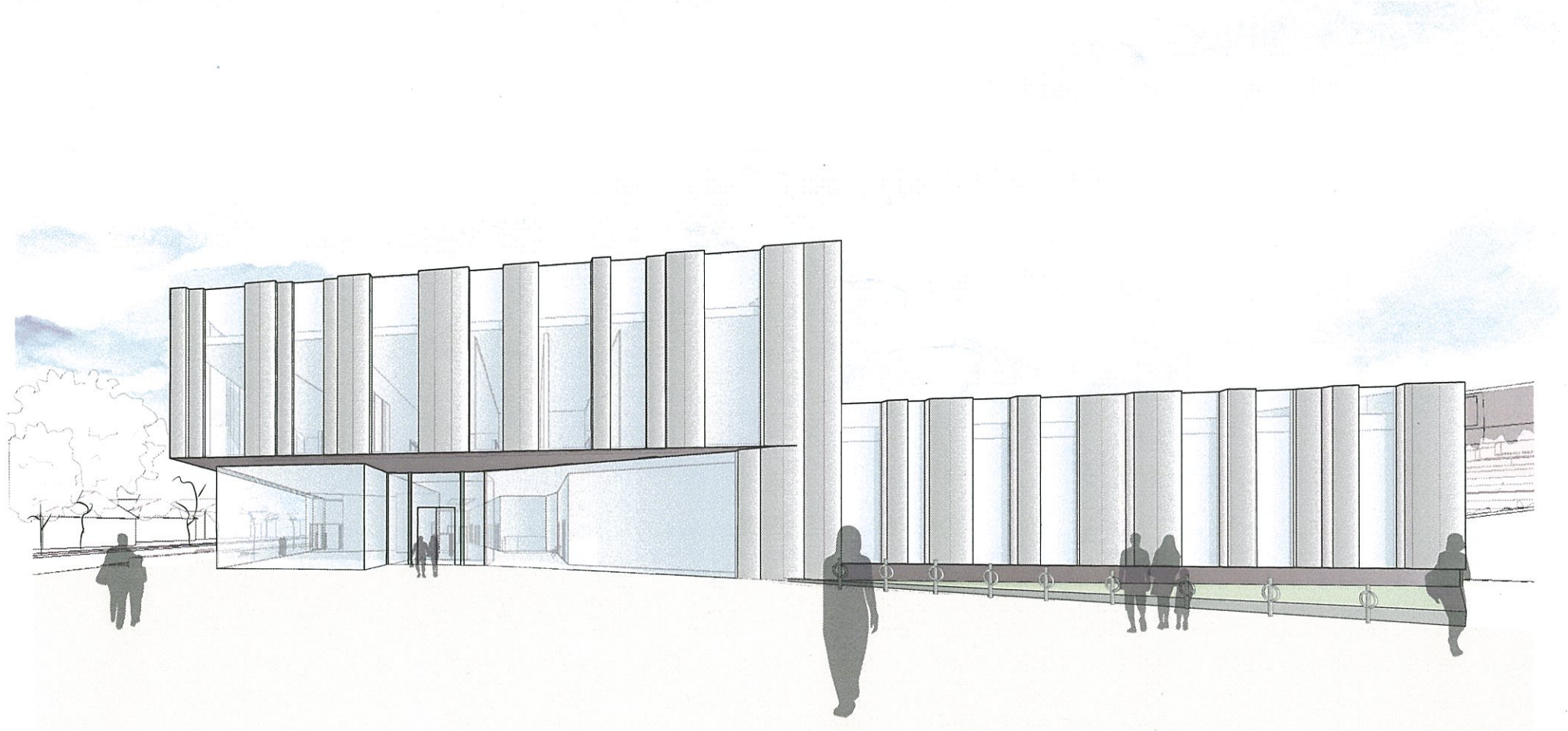


A. Pedestrian view from North Conduit Avenue with LIRR station beyond, looking southeast.

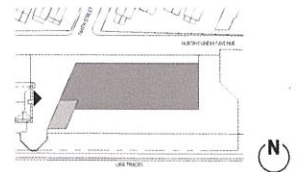


DattnerArchitects

PEDESTRIAN VIEW

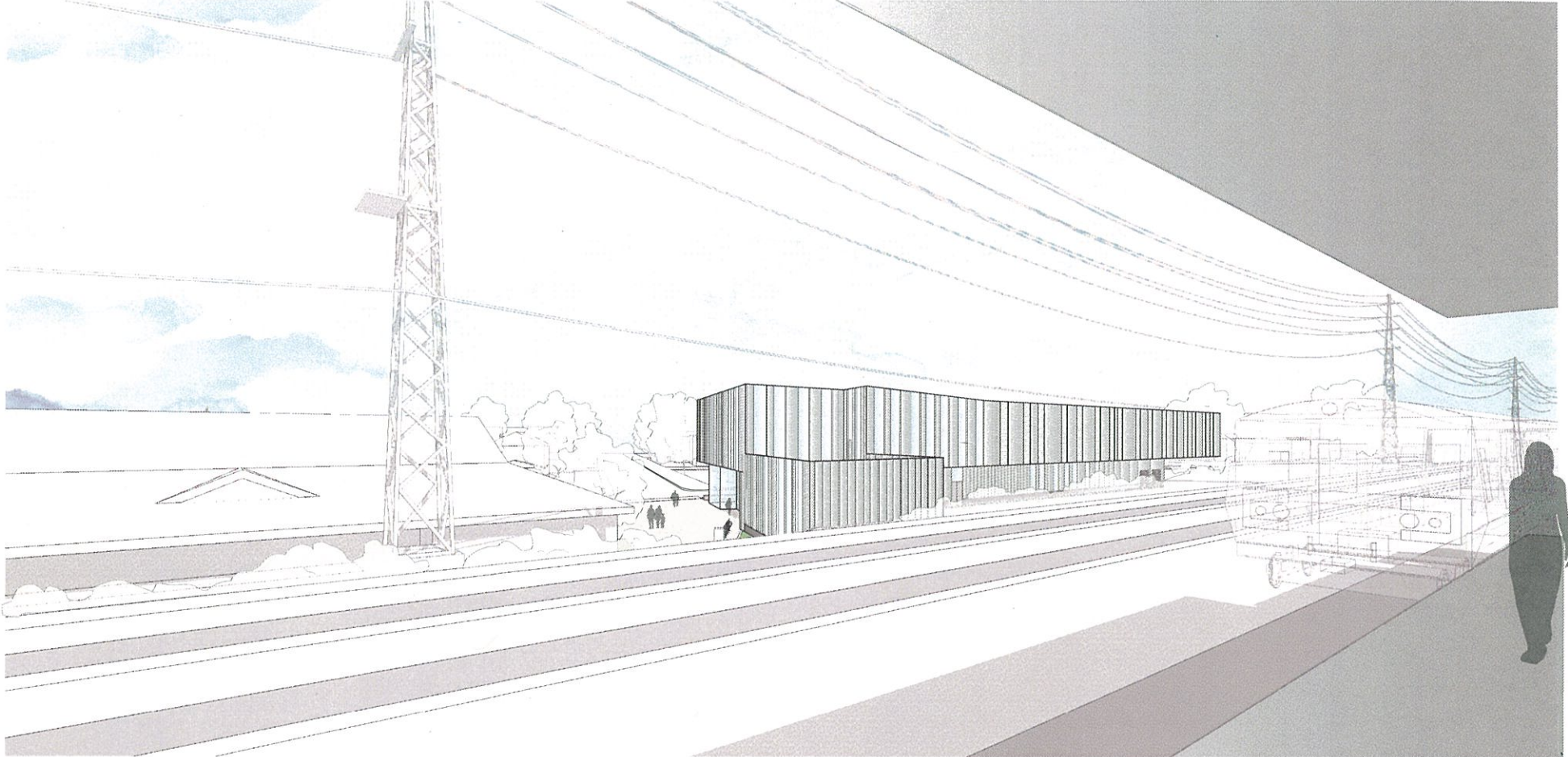


B. Pedestrian view of main entrance, looking east.

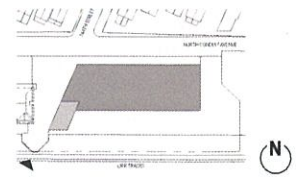


DattnerArchitects

PEDESTRIAN VIEW



C. Pedestrian view of main entrance and public open space from Rosedale LIRR station platform, looking north.



DattnerArchitects

PEDESTRIAN VIEW

**THE COUNCIL
THE CITY OF NEW YORK**

Appearance Card

I intend to appear and speak on Int. No. _____ Res. No. _____

in favor in opposition

Date: _____

Name: Richard Hellenbrecht (PLEASE PRINT)

Address: 246-72 86 Rd, Bellerose 11426

I represent: Comm Bd 13Q

Address: 217-41 Jamaica Ave, Q.V 11425

◆ Please complete this card and return to the Sergeant-at-Arms ◆

**THE COUNCIL
THE CITY OF NEW YORK**

Appearance Card

I intend to appear and speak on Int. No. _____ Res. No. _____

in favor in opposition

Date: _____

Name: Philip Heller (PLEASE PRINT)

Address: Director, Capital Construction Unit

I represent: NYPD

Address: _____

◆ Please complete this card and return to the Sergeant-at-Arms ◆